

MGH

MOHLALETSE

GUEST HOUSE



UNIQUE EXPERIENCE OF

Village Leisure

MOHLALETSE GUEST HOUSE WAS ESTABLISHED IN 2015, NESTLED IN THE HEART OF SEKHUKHUNE REGION IN LIMPOPO, DESIGNED TO GIVE YOU A UNIQUE EXPERIENCE OF VILLAGE LEISURE.



Mohlaletse Guest House is located in Mohlaletse Village, Sekhukhune District in Limpopo. We aim to provide travel solutions mainly for business, corporate and leisure travellers. The guest house is graded a three star from the tourism grading council for the past five years.

With extensive experience in the industry we are committed to enabling the unlimited potential of accessing markets throughout the world by experiencing the richness of the Bapedi Culture and Heritage. Mohlaletse is based in the Kingship of Sekhukhune and Kingdom of the Bapedi.

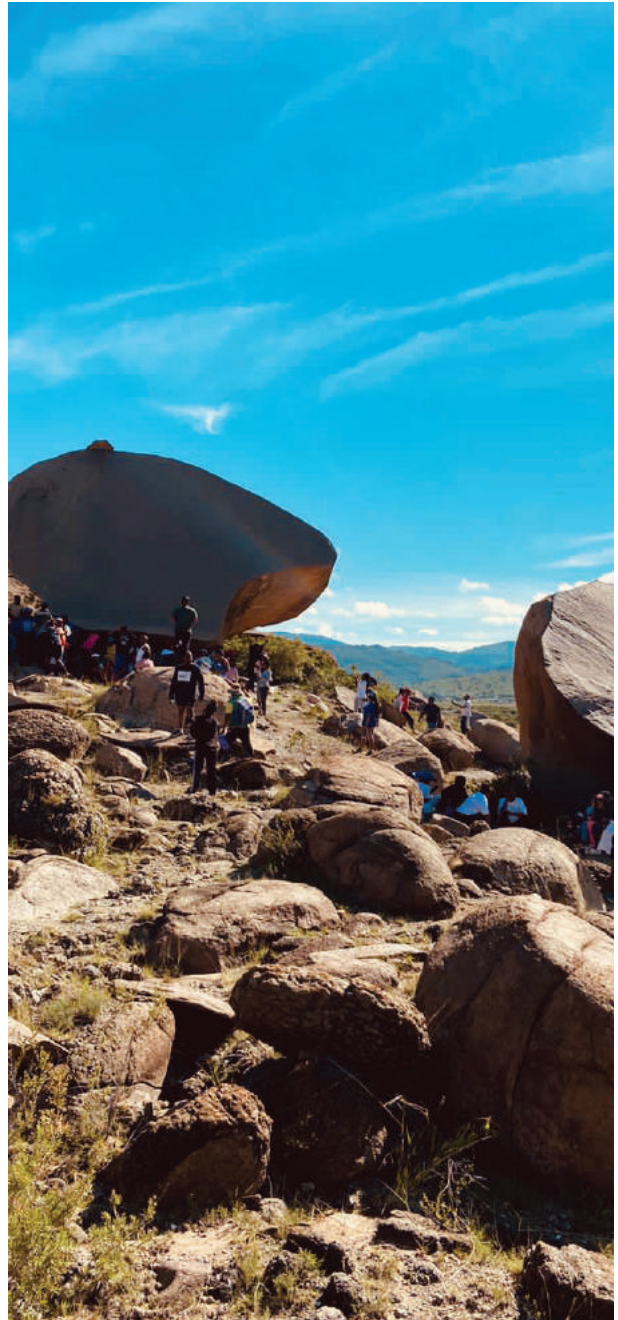


Mission

The ideal base is to explore the history of Sekhukhune and to offer our guests the perfect place to rest.

Vision

To offer an extensive wide range of tourism services to attract international and domestic travelers.



OUR FACILITIES

- Accommodation
- Conference Facilities
- Swimming Pool & Braai Area
- Outdoor Spa Retreats
- Wedding Venue
- Cultural Tours
- Shuttle Services



PLACES TO VISIT

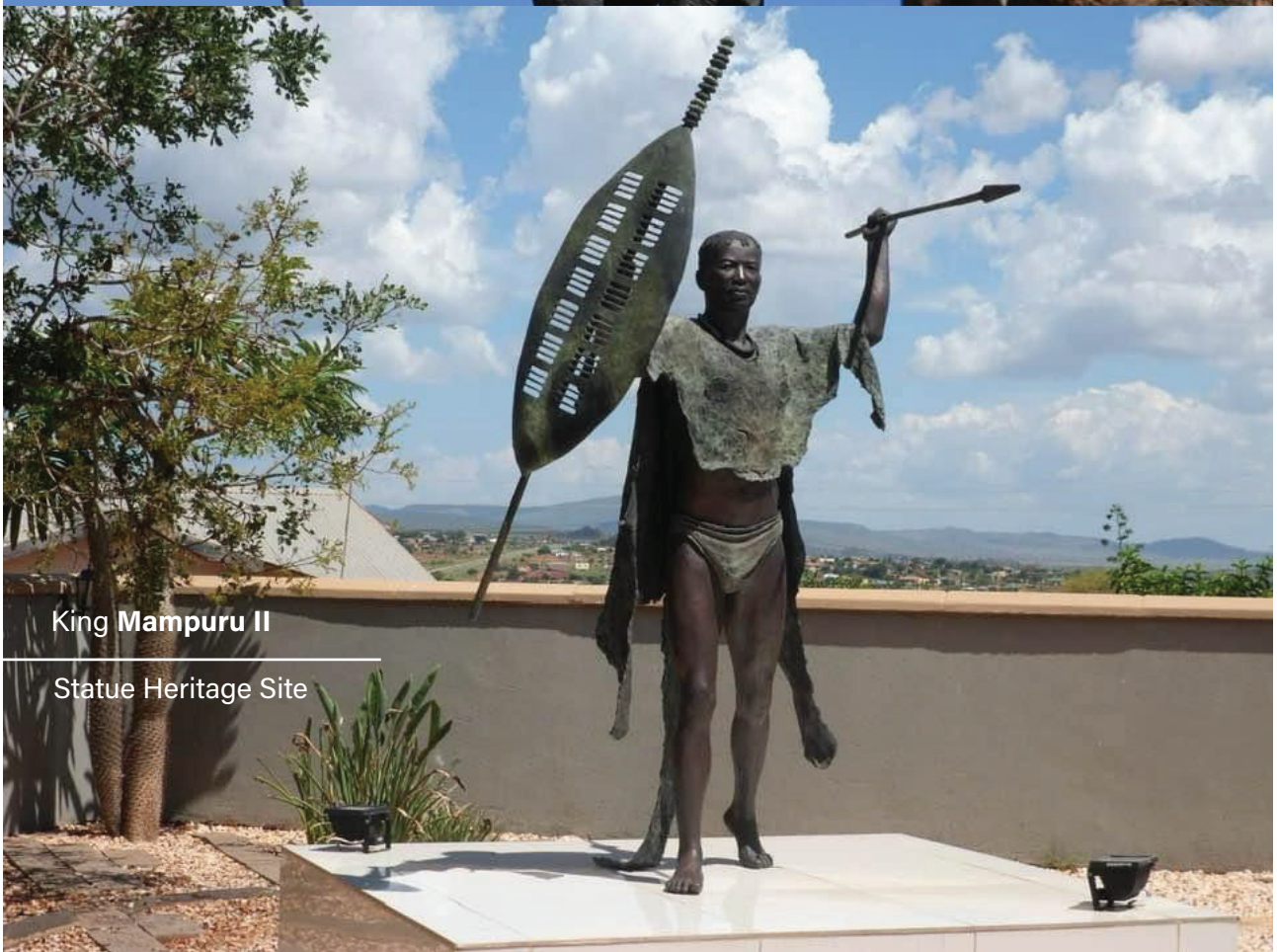
Tšate **Heritage Site**

King Sekhukhune I Statue



King **Mampuru II**

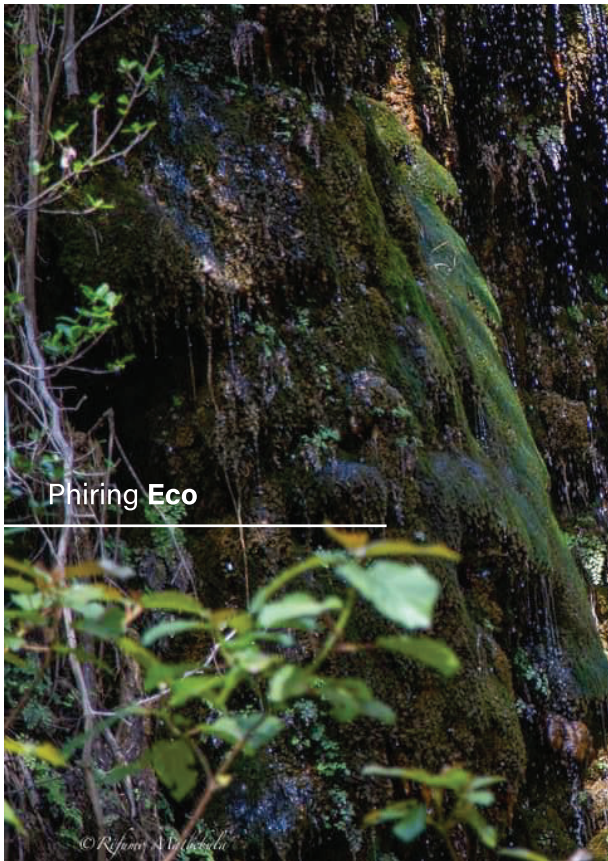
Statue Heritage Site





Manche Masemola Gravesite

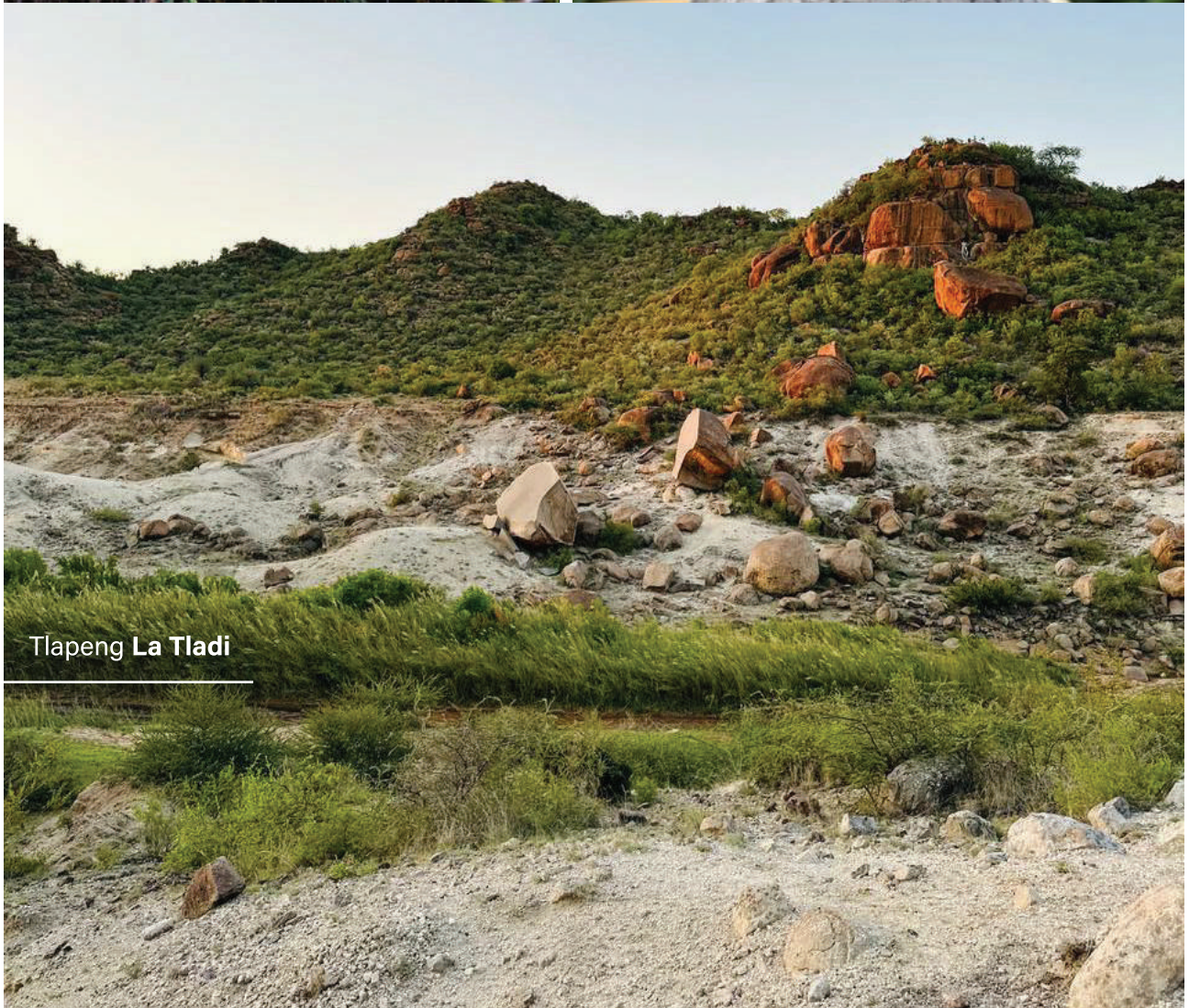




Phiring Eco



Arum Lilly Festival



Tlapeng La Tladi

MOHLALETSE HERITAGE SITES

PLACES TO VISIT

MOGOLANENG

- The place of rest. Our ancestors herdmen used to rest or sleep there when they were at the mountain for greener pastures, and there was not enough pasture at their homesteads. They called it Mogolaneng derived from 'Mogola' (spot of open space). It also shows a view of the village particularly Moshate (Royal Palace).

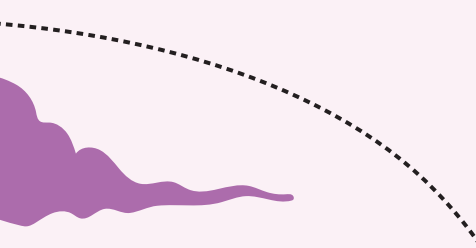

MONOKANENG - MINOR MOUNTAIN WETLAND WITH A WATER STREAM

Wetland with a water stream; is a place that was used by local villagers where they got water. Even their livestock was surviving by getting water from the stream along the Monokaneng place.

ACTIVITIES

NTATAPOO HIKING STARTING POINT - MOŠATE

The trip starts from the royal palace of Marota **Mohlaletse of King Sekhukhune II**. The mountain is part of the royal palace and the hiking trail is estimated to about 8km. The mountain top and spot where there is a beacon which serves geographical and demarcation purposes is installed. The mountain gives 95% of Fetakgomo Local Municipality view. This is a place of plenty wild fruits/berries such as mapara, dihwela, mabupudu, dithetlwa, dikgoto and many more.



NTATAPOO - HIGH POINT

The mountain top and spot where a beacon which serves geographical and or demarcation purposes is installed . The hikers stay there for half hour and enjoy the best view , roughly 95% , of Fetakgomo local municipality . They pose for some snaps for their families back at home . This is the place of plenty of wild fruits/berries such as `mapara` , `dihwele` , `mabupudu` , dithetlwa , `dikgoto` and many more .



DIPHALE-LE-DIPHAJANA: TLAPENG LA TLADI

- The place with two pieces of stone which was broken down by rain thunder in 1894 immediately after arrival of Marota who were led by acting kgoši Kgobalale Sekhukhune I who was assisting queen Thorometšane Morwamotšhe II the mother of King Sekhukhune II who was still youth at the moment . Marota and other Bahlakwana clans were just arrived from Manoge-Masehleng .
- Letlapeng refers to `place of stone` and tladi is rain thunder . ` Letlapeng la tladi `literally translated as place of stone of thunder in English , and this entails that the stone was broken down particularly into two pieces by a rain thunder.



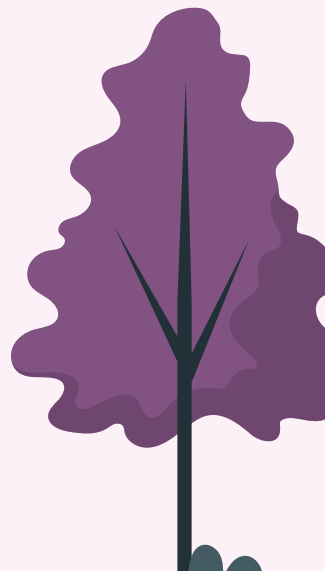
BONWANKE - FOUNTAIN SPOT

Once upon a time one of great and brave herdmen namely Feredi Mathabatha encountered a threatening meeting with a tiger which was resting in branches up on a tree near a water fountain . He went into the fountain to get rid of himself from thirst . He knelt down to drink water . While kneeling down for water he saw image of tiger in the tree from the same water he intended to drink. He then realised his life is in danger . He stop his thirst quenching activity and with a serious caution moved away and ran for survival. He narrated his encounter to the villagers and the villagers named the place `bonwankwe` from that time .



DIPHALE-LE-DIPHAJANA

The historical place. The place was named after two small mountains namely Diphale and Diphajana. It is place of arrival . Matebele a Malleka arrived at Mohlaletse and settled for some years at the place . Phaša Phokwane clan followed the Matebele to settle there , Phaša named the place `diphale le diphajana` the original name of place of their origin namely `Diphale` in Tubatse region , and lastly Bahlakwana of king Sekhukhune II arrived there and allocated spot called `Meletšeng` in 1894 . They all shifted from `Diphale-le-diphajana` in different times to Mogohlwaneng, gaPhaša and Maroteng respectively where they are still residing at .





Contact Us

Front Desk: 076 605 4336

Email: reservations@mohlaletsequesthouse.co.za

Website: www.mohlaletsequesthouse.co.za

Manager: Lefentje Mampuru

Email: Lefentje@mohlaletsequesthouse.co.za

Facebook: Mohlaletse Guest House

Instagram: @mohlaletsequesthouse

Tiktok: @mohlaletsequesthouse

Address: Stand No M10 Mohlaletse Village
King Sekhukhune Road
Sekhukhune District
Limpopo, South Africa